

Winter 2019

Radcliffe on Trent Parish Council

Newsletter



Radcliffe on Trent Parish Council and Community

Radcliffe on Trent Parish Council

The Grange & Grange Hall

Vicarage Lane, Radcliffe on Trent

Nottingham, NG12 2FB

Tel:0115 9335808

clerk@rotpc.com

bookings@rotpc.com

Parish Clerk.....Jacki Grice 0115 9335808 Ex2

The Grange & Grange Hall Manager.....Lisa Simpson 0115 9335808 Ex1

Keep up to date on news and social events from the Parish Council and events on our social media sites.

Grange Hall @ROTPC



WWW.ROTPC.COM



thegrangegrange



To help comply with
need to confirm that



GDPR consent requirements, we
you would like to receive emails

from us.

Grange Hall will only use your email address to send you information from your Parish Council and about events that happen in Grange Hall and the village. We promise NOT to inundate you with emails or pass on your data to anyone else. You may unsubscribe at any time. You can view our privacy notice at www.rotpc.com/privacy-statement/

If you would like to be a member of the Grange Hall Email List, please send an email to bookings@rotpc.com with the word EMAILING LIST in the subject line.

Stunning Front cover photo by Sandi Macleod.

Photo taken in the Rockley Park

Chairmans's Report

We are now 6 months into a new term, it has been a steep learning curve for 14 new Councillors and I am pleased to say they have settled in brilliantly and are working hard for Radcliffe on Trent.

All our meetings are open to the public and we welcome your comments and suggestions. We have a four year plan which can always be added to if ideas are put to us.

As there was no requirement for an election in May there were no election expenses incurred. I am pleased to say this money has been put towards the refurbishment of the children's play area in the Grange, which has been recently re opened.

We have put on many events this year and we continue to expand the type of event to appeal to all ages and tastes.

We are fortunate to have the lily ponds, the rec, Cliff Top. Valley Road and Dewberry Hill, great open spaces for us all to enjoy. Their up keep is supplemented by the conservation volunteers, thank you all for your valued support and physical efforts.

We do not intend to rest on our laurels there is still much work to be done to increase our leisure facilities, this will be all the more important when the new houses are built.

I pay tribute to our ground staff who have done a fantastic job keeping the village both colourful and tidy this year, no mean feat with our diverse weather conditions. A personal thank you to Jacki, Lisa Jacquie and Sally who continue to deliver a great service as well as keeping 18 Councillors in order.

This is your village. Please engage with us to take Radcliffe forward

Jo Spencer
Parish Council Chairman

-oOo-

Chairpersons Report - Amenities

What a busy few months it has been for the village amenities. We have finally finished the refurbishment to the public toilets in the village. A useful pit stop when required and we are very pleased with this new facility.

We have completed the new additions to the Grange Hall children's play area and

we are very pleased with the outcome. It's had a refreshing update and we hope the children will enjoy it. We are currently starting to refurbish the play equipment at the Wharf Lane play area. We know how valuable all our fantastic play areas are for the community and we work hard to maintain them. This time of year I feel most lucky to live here to enjoy the beautiful colourful outdoor parks we have. It's a pleasure to walk along The Cliffs and to enjoy the colours of autumn. We came runner up in the local best kept village competition and I would like to thank all our amazing ground staff who work so hard all year around to maintain these beautiful areas in the village. I would also like to thank the office staff who work so hard behind the scenes to ensure our facilities are fully supported.

The Radcliffe Conservation Group have been working very hard and I wholly appreciate all their hard work - from maintaining Dewberry Hill to working on pathways for access. They are a valuable resource to the village and we are grateful to them.

Over the summer we had some amazing events in the village, the always amazing carnival, the fantastic Radfest, the very popular village show and the wonderful Picnic in the Park. So many wonderful community events and I would like to thank everybody involved in all these events I know the hard work and time these events take up. Well done to you all!

The cinema events at The Grange Hall are going from strength to strength and it is a very well run popular event for all ages. Many thanks to The Grange Hall manager and volunteers who help run each film.

I had the pleasure to attend the unveiling of a memorial plaque to former resident of The Grange Hilda Dowson who was heavily involved in the women's suffrage movement. It was a lovely sunny day and personally a very moving and important event. Many thanks to the Radcliffe History Society and Radcliffe WW1 group with help on the day from the awesome WI for putting such an important event and memorial together.

I would like to take this time now to wish you all a very Merry Christmas and a Happy New Year!

Alice Tomlinson Chair of The Amenities Committee

-o0o-

Planning and Environment Committee

What is CIL?

The Community Infrastructure Levy, [CIL] is a planning charge on all new properties, new developments and some refurbishments. All properties with a 'gross internal structure' exceeding 100 square metres are liable. In Radcliffe this attracts a charge of between £40 and £100 per metre squared and therefore it raises a significant amount of money.

CIL enables local authorities to help provide the infrastructure necessary for the additional population when new properties, or more significantly, housing developments, are built. CIL is designed to support the building of new and/or extended schools, sports and leisure facilities, transport improvements and health care. To a great extent we can identify and prioritise our needs locally and decide where that money is spent.

The bad news is that CIL isn't retrospective and the large development on Shelford Road doesn't attract the levy because planning permission was granted before CIL was introduced. For these houses the lesser charge of s106 applies.

Anne McLeod

Chairman of Planning and Environment

Finance and General Purposes Committee

Whilst the thoughts of retailers turn to Halloween and Christmas sales the thoughts of this councillor are turning to all things budgetary, which can be just as scary. It is at this time of year that the Council starts to consider its budget for the next financial year. It only seems like yesterday that I sat at my first meeting for the Parish Council, but there has been little time to settle as there is a lot going on. The Skatepark continues at a pace and as I write this I see equipment being refurbished at Grange Park and work is continuing at Rockley Park and in other areas across the village.

So far this year the Finance and General Purposes Committee has been pleased to make funds available from its Grants Fund to Young Radcliffe (Radfest Event Provision), Phoenix Signing Choir and 5th Radcliffe on Trent Brownies and looks forward to providing further assistance to local groups who apply (See Town Clerk for details).

This year we have a new Council with 75% new councillors, each of whom has thrown themselves into a variety of interests and projects and each with their own ideas many of which will need funding to move forward. As Chair of the finance arm of the Council I see my role very much as keeping a close eye on the council's pennies and simultaneously helping to manage expectations, whilst trying not to stifle initiative, a vital element of human resources in any organisation.

The Council has just established the first iteration of its 4 Year Plan. Unsurprisingly, the thoughts of councillors in the Plan have turned to strategic matters, particularly infrastructure issues, such as roads, the need for improvements and expansion to existing services, the requirement for increased leisure provision and – of course – both the short and long term impacts of new housing in the village. The impact that the large housing provision has on local services (some provided directly by the Parish Council) and its effect on community cohesion highlights the importance of investment in our infrastructure. To this end the Council is keeping an eagle eye on the building levy generated by new developments to ensure it is used for the services the village needs.

At this time of year my concern is more about balancing budgets and looking to immediate needs. I strongly expect that over the next year things will change and I expect financial demands to be made of the Council. We are ready!

I am pleased to be working alongside my Vice Chair, Gillian Dunn and Sally Horn our Accounts Clerk and am grateful for both their support and attention to detail.

Alan R Harvey, Chair Finance and General Purposes Committee

Chairmen of the Parish Council Committees

JOSEPHINE SPENCER—Chairman of the Parish Council

21 Grandfield Avenue, 07918 140911 (m) josephine.spencer@rotpc.parish.email

SUE CLEGG—Vice Chairman of the Parish Council

Apartment 4, Radcliffe Court, 2A Cropwell Road, 0115 9334759 (h)

07952 912183 (m) sue.clegg@rotpc.parish.email

ANNE MCLEOD- Chairman of the Planning & Environment Committee

4 Jasper Close , Tel: 07966 478873 (m) anne.mcleod@rotpc.parish.email

ALAN R HARVEY - Chairman of Finance & General Purpose Committee

The Laurels, Saxondale Tel: 07722 613753 (m) alanr.harvey@rotpc.parish.email

ALICE TOMLINSON - Chairman of the Amenities Committee

40 Birkin Avenue, Tel: 07947 740154 (m) alice.tomlinson@rotpc.parish.email

Radcliffe Parish Council Silver Cinema
Wednesday 27th November

YESTERDAY

At Grange Hall

£2 Admission - Tickets From Grange Hall

Telephone 0115 9335808 Ex1 or

Email Bookings@rotpc.com

**Doors Open At 12.30pm -o0o- Film
Starts At 1.00pm**

★ ★ RADCLIFFE ON TRENT ★ ★ VILLAGE SHOW



Photos by LizArc
Photography



VILLAGE SHOW

We ordered the sunshine and it shone on another fantastic Village Show. Opened again this year by our resident local BBC sports presenter, Mark Shardlow.

Mark also stayed to help compere the event along with Ricky Coxon, who again did a sterling job and made us laugh - (anyone would think he'd just come off the Radpanto stage.)

We had the most children's entries we've ever had in 7 years, a vast variety of fruit, veggies, flowers, paintings, bakings, wagging tails and so much more. It was enjoyed by over 2000 of you and it was lovely to see families and friends, young and old, all enjoying the day!

Our first year of Demonstrations and Workshops were a great success and well attended in The Grange. The expanded children's fun and activities were a huge hit with the youngest of Radcliffe residents, too.

Our village Show Committee again put on an amazing show for our ever-supportive community.

Huge thanks to everyone involved on the committee, to all of our extra volunteers on the day and to our sponsors and supporters:

Bowler & Charsley Opticians, Campions Solicitors, Cotgrave Service Station, David Ingram, Burleys, John A Stephens Ltd, L H Woodhouse & Co Ltd, Lees Barn Allotment & Garden Association, LizArc Photographic, Councillor Mrs K Cutts MBE, Positive Futures, Pure Motion, Radcliffe Archaeological Society, Radcliffe Boys Brigade, Radventures, Radcliffe on Trent Parish Council, Radcliffe on Trent Scouts, Radcliffe WI, RAINS, Councillor Mr R Upton, Saxondale Kennels, Tesco, The Flower Room and Bob Coleman.

Extra special thanks go to the team at Michon Ltd who have designed all of our promotional material, which we think has given a real vintage twist to our traditional village show.

Any money raised from the selling of produce and unclaimed prize money has been donated to Trent First Responders.

Planning is already underway for next year's Show on Sunday 6th September...with even more categories and fun activities for everyone to get involved in.

The categories for 2020 will be announced over the coming weeks so you can start getting crafty, planting, picking, brewing and planning your entries over the year ahead.

If you would like to get involved in next year's show, join our wonderful Committee and help out on the day or to run a new category for 2020, please get in touch. We would love to hear from you!

Lucy Spencer Chairman of Radcliffe Village Show

Coming soon to a Grange Hall near you!

You may have noticed posters around the village and on Facebook, telling you about a proposed Events Committee to help us make full use of the Grange Hall.

Our village is changing as never before. New houses are being built which will increase our population considerably. There's never been a better time to think about how we can bring the community of Radcliffe on Trent together... even more.

The Grange and Grange Hall are excellent facilities in the centre of our village and a group of us have set about thinking how we can use them to enhance village life. We asked for volunteers and our first meeting was held in October. We were pleased to welcome some new faces (phew!) including a young lass of 9 years of age who took an active and invaluable part in the discussion.

The Grange Hall already hosts an extremely popular monthly film event, as well as a range of clubs, and, of course, it is available for private hire. What we'd like to do is widen its appeal. To this end, we considered monthly musical events covering a range of genres, a photographic exhibition, Strictly Radcliffe and a book festival. We also thought about "Have a Go" sessions where people could have a taste of different activities. We could record whatever we do, as well as the varied round of events in the village and interesting facts and figures, in a Year Book - a sort of Radcliffe on Trent Domesday Book (insert own joke here) which might, hopefully, interest residents of the future.

Back in the present, musical genres we considered putting on each month included:

- Folk
- Jazz
- Brass bands
- Chamber music
- World Music
- Pipe Band
- Themed dance evenings (disco)

If you have any knowledge, experience, interest or know-how about any of the above, PLEASE GET IN TOUCH!! We would love your input!

Barbara Deavin Vice-Chair Amenities barbara.deavin@rotpc.parish.email

Lisa Simpson Grange Hall Manager bookings@rotpc.com 9335808 ext. 1

LOCAL HISTORY TALKS

Radcliffe Local History Society is launching a programme of monthly public Local History talks for 2020.

This is a new venture for the Society, which has over the years established a high reputation for its research, its publications and projects, the latest being the creation of Radcliffe History Boards.

The talks, all by well-known speakers, will cover a range of topics relating to the history of this area.

They will be held on the first Wednesday of the month, starting at 7.30 pm, in the Trent Room of Grange Hall. The entrance fee is £3, to include tea, coffee and biscuits.

Programme of talks for 2020

Wed 5th February 'Lace, slums and the occasional riot: The making of Victorian Nottingham'. By Chris Weir (former Principal Archivist at Nottinghamshire Archives).

Wed 4th March 'The Sutton Bonnington Escape - a little-known episode from the First World War' by Professor John Beckett.

Wed 1st April 'Viking Nottinghamshire' by Rebecca Gregory. (To be confirmed)

Wed 6th May 'The inns and pubs of old Nottingham' by Brian Howes.

Wed 3rd June Excursion (to be arranged).

Wed 2nd September 'The good, the bad and the reality - notable women of Nottinghamshire' by Mo Cooper.

Wed 7th October 'Shortages, soldiers and strikers: Notts County Asylum (Saxondale) 1912-1924' by Marion Caunt, Rosie Collins and Pauline Woodhouse.

Wed 4th November 'Henry Garnett and the Gunpowder Plot - a local angle on the event' by William Ruff.

Wed 2nd December 'Food and drink in Tudor and Stuart Nottinghamshire' by Mark Dawson.

Dave Barton.

Radpanto

2009 saw the first pantomime performed by the newly formed Radpanto and here we are in 2019. The shows have got bigger and better and we continue to build on this. The actors get their applause but no show cannot be put on without a dedicated back stage crew. Costumes, lighting, props and stage design and build do not happen without a dedicated few who deliver every year. Thank you.

Front of house springs into action during the performances thank you to all those who do a great job.

Aladdin will be performed in the Grange Hall on the 12– 15th December.

Tickets available from Burleys and more info can be found on our Facebook page

Finally thank you to all the audiences who have supported us over the years. Your participation and laughter makes the show even better.

Radpanto@btinternet.com find us on Facebook .

Jo Spencer



RADCLIFFE ON TRENT

LOCAL HISTORY SOCIETY

Did you know that we launched our new website in October 2019.

It can be found at www.radcliffe-on-trent-local-history-society.co.uk/

We are planning to introduce new articles each month covering many aspects of the history of our village. Subjects we will cover are the history of the church, schools, law and order, public houses, shops, people of note and many, many more items of interest.

We are also collating a gallery of photographs to go alongside the stories.

Although we have a huge amount of documentation, photographs and memorabilia, we are constantly on the look-out for more. We accept donations or in some cases we will copy the photographs etc and return them to you.

The society is a very small group of researchers and our aim is to collect and publicise the history of Radcliffe and we intend to keep this history alive by providing a detailed and interesting website together with maintaining an archive record. To enable us to continue with this work we do need your help, so if you have any items of village or family history, be it photographs, written material or just want to have a chat about your life in the village, please contact the Archivist on 01159332685.

We are planning future projects (i.e. see item on local history talks in this publication) but we can also help people who are interested in local families and some of our material may be consulted by prior arrangement with the Archivist. We hold paper copies of census returns, electoral rolls, directories, parish records and school photographs. These are just a few of the items we have in our archives.

We hope you enjoy visiting our new and exciting website.

Keep looking for new articles.

Skatepark Update - We did it !!

After 4 years of fundraising ,repair, hard work, consultations, meetings and perseverance we are pleased to announce the brand new concrete skatepark is on its way ! Hurrah!!

Over the summer we said goodbye to our much loved but unrepairable wooden park and said hello to our brand new one.

Most of you by now will be aware of the work going on site at wharf lane to prepare for and build the new skatepark.

The facility is a well thought out skate park that will cater for all ages and abilities as well as being a sustainable addition to the village.

A big THANK YOU to the community and many individuals who fundraised, came to events or just generally supported what were doing. It's been a rollercoaster ride for all involved and we are finally there with the build taking shape onsite.

We will give you regular updates along the way and we hope the park will be completed just before Christmas. We are going to have an official opening around Easter time next year and we hope to see you all there

A genuine massive thank you once again for all your support. We wouldn't be where we are now without this amazing community. Have a wonderful Christmas. We look forward to seeing you at The Skatepark in the New Year.





Cups won on Sunday 8th September...

Radcliffe Bake Off Cup for the Overall Winner - **A. Reagan**

Michael Mills Cup for the Best Photograph - **Diane Kidger**

Jack Buckberry Cup in Horticulture - **Judy Wilson**

Peggy Deavin Cup for Children's Poetry - **Olive Southall**

Kath Ready Cup for the Best Flower Arrangement - **Judy Wilson**

Yaadgaar Tandoori Restaurant Cup for the Best Bread - **Michael Bedford**

The Late Clive Tompkins Cup for the Best Chutney - **James Pratt**

In Memory of Bob Ayres Cup - **Lesley Bradbury**

The Peter Whitehead Cup for the Junior Class - **Jessica Tombs**

The Peter Whitehead Cup for the Best Vase of Mixed Flowers - **Judy Wilson**

Sewing Award - **Linda McGill**

The Richard Andrew Cup for Adult Poetry - **Ricky Coxon**

The Vintage Magnolia Cup for Art - **David Archer**

The BBQ Off Apron! - **Matt Ainger**

Well Turned Ankle - **Selina McCalla**

Bowler & Charsley Cup for wine making — **David Colley**

Knitting Cup for outstanding yarn — **Penny Dunn**

Radpanto cup for Best Home Made Liqueur — **Carol Chambers**

The former Radcliffe Swimming Pool helps local groups

Since the unfortunate closure of the local swimming pool in 2014 the committee have been distributing funds that remained.

A total of £52,000 has now been distributed to an assortment of groups and charities within Radcliffe on Trent, the list include; Radcliffe Parish Council, Boys Brigade, Carnival, Bowls Club, Cricket Club, Methodist Church, St Marks Church, Zen Club, Manor House, RSPCA, Fish Scheme, Lees Barn Allotment association, Play group, Infant School, Angling Club, Male Choir, Ladies Choir, Skate Park, Radfest, Scouts, Radcliffe Station, Guides, ROTSA.

Nigel Buck (Chairman of ROTSPA) said it was unfortunate that Radcliffe lost a sporting venue but once this was accepted it was great to be able to assist a wide variety of groups all within the Radcliffe area and see our money be used in numerous ways.

Radcliffe-on-Trent Carnival

There are a lot of new houses being built in our village and planning permission is being sought for even more.

Many have speculated that the increase in population will result in Radcliffe no longer being classed as a village but becoming a town. (Actually, many existing towns are a lot smaller than Radcliffe.)

Have you ever taken the time to think what makes a community a village? It might just be me, but I don't think it can be measured purely in terms of population.

When I think of a village the images that come to mind are straw bales and tug of war. Straw bales shout "countryside". A tug of war is what country girls and boys do for fun at the end of an enjoyable village event.

Still with me? So, when did you last see folk sitting around on straw bales enjoying themselves and 58 women and girls (some fuelled by Pimms) dragging 15 terrified blokes across The Grange on the end of a rope?

For me this was the essence of Carnival 2019. A sunny day, good beer and food, great music and entertainment. Old and young people having fun, things going wrong but getting sorted. Punch and Judy, Estelle and the Redfish and The Shanty Band.

We don't just throw this together you know. It may look effortless, but the hard drinkers of the Carnival Working Group are already meeting to plan next year's extravaganza. Radcliffe's publicans are rubbing their hands together in anticipation of the profits.

So, is it going to be better than last year? Of course. Is the sun going to shine? Obviously. Will the generator pack up again? Who cares, we'll sort it.

So, good villagers of Radcliffe-on-Trent, make a date in your diaries for Saturday 11 July 2020. We'll let you know the theme when a bunch of 8 year olds tell us what it is, and you can plan your floats and your costumes.

You can get through the long cold winter dreaming of sitting on a straw bale in the sunshine with a glass of Black Rat cider watching inebriated women and men, boys and girls in a tangle of limbs having the time of their lives.

And if you would really like this village to remain a village even if we double in size, consider joining the working group. Just contact us on rotcarnival@gmail.com and you will be welcomed with open arms.

It won't be great for your liver, but you will have a lot of fun!

Local history researchers honour Radcliffe suffragist Hilda Dowson with commemorative plaque



Rosie Collins Radcliffe WW1 Group and Marion Caunt, Radcliffe
Local History Society

Photo by David Graham

A blue plaque was unveiled at The Grange on 24 August 2019 in honour of former resident Hilda Dowson. She lived in Radcliffe on Trent for fifty years and resided at The Grange from 1924 until her death in 1956. Hilda Dowson was a committed member of the National Union of Women's Suffrage Societies (NUWSS) and became joint secretary of the Nottingham branch in 1910. She campaigned for votes for women through peaceful means, such

as petitions, demonstrations and speaking at meetings across the East Midlands. After the vote was gained, Hilda then campaigned for female police officers and magistrates and for legislative reforms to improve the position of women.

The impetus for having a plaque in her honour and an unveiling ceremony arose from research conducted by Radcliffe WW1 Group, who discovered Hilda's story. Group members Rosie Collins and Marion Caunt conducted much of the research and then set about obtaining a plaque and organising the ceremony. After welcoming the guests Marion Caunt, also a key member of Radcliffe Local History Society (RLHS) explained that the plaque had been donated by RLHS, who had received a small grant from the Heritage Lottery Fund. She went on to discuss the recent achievements of RLHS in making local history visible in the village. Rosie Collins then described Hilda's life and her role in the suffrage movement. Councillor Kay Cutts continued by speaking about women's progression in local and national politics since Hilda's time. The Mayor of Rushcliffe, Christine Jeffries, concluded with a memorable account of her career in politics from the 1940s to the present day.

The plaque was unveiled by Councillor Cutts and the Mayor to much applause. The guests then enjoyed a splendid afternoon tea. Hilda had been president of the Radcliffe branch of the Women's Institute from 1938—1953 and the tea was provided by current WI members in her memory. A poster exhibition produced by Radcliffe WW1 Group and RLHS was on display in The Grange. After the event, Marion and Rosie said the blue plaque would be a permanent reminder in Radcliffe of a local woman's role in the long fight for universal suffrage.

Detailed accounts of Hilda Dowson's life can be found at www.radcliffeontrentww1.org.uk and at www.radcliffe-on-trent-local-history-society.co.uk

Creative Stitching

We are a small group of friends who meet once a week on Tuesday afternoon in the Dowson Room at The Grange in Radcliffe on Trent from 1.30-3.30pm.

We love to stitch.....anything, be it embroidery, patch work, cross stitch or anything creative.

If you would like to join us you would be made very welcome, whether you are a beginner or more experienced

Either drop in on a Tuesday afternoon and have a chat or you can telephone: Sandra on 01949 81981



saxondaleselfstorage.co.uk

FOR ALL YOUR STORAGE NEEDS

Great Value - Only £25.99/week!
Perfect Sizing - 160sq ft unit
Secure Site - Flood-lit with CCTV
Open from 7am - 7pm
Located near Radcliffe-on-Trent



saxondaleselfstorage.co.uk | 0115 9893722

Rushcliffe Chiropractic Clinic are gearing up for their annual fundraiser to give as many homeless people in Nottingham city and Rushcliffe a warm bed for Christmas. Last year they collected 117 sleeping bags and £547 which we donated to Emmanuel House. This year we also intend to give to the Priory.

Please bring any unwanted sleeping bags to the clinic at 16 Grantham Road before 10th December 2019. If you are part of a school, club or group and want to arrange a collection day we would be very happy to come and get them from you! We would also appreciate sponsorship for our sleep out on 5th December, the money raised will be donated directly to charity.

Many thanks for your support!



THE VALE OF BELVOIR ROTARY CLUB

Helping Santa at Christmas

Members of the club will again be supporting Santa in his pre-Christmas visits to the Radcliffe-on-Trent area to ensure he is fully prepared before his annual visit. The club will be guiding him around the villages while his reindeers rest up for their busy night on Christmas Eve. You can expect to see him on the following nights in the following areas:

Newton_– Friday 6th December 5.45-8.30pm

St James Park_- Friday 13th December 5.45-8.30pm

Radcliffe-on-Trent (Canadian Estate)_– Monday 16th December 5.45 – 8.30pm

Radcliffe-on-Trent (Shelford Road and roads off)_– Tuesday 17th December 5.45 – 8.30pm

Radcliffe-on-Trent (Cropwell Road, Main Road & Bingham Road)_– Wed 18th Dec 5.45 – 8.30pm

Who We Have Supported Locally This Year – Our very successful Art Exhibition and Craft Show run jointly with Bingham and Radcliffe Rotary Club raised £3000 for the Notts/Lincs Air Ambulance and 2 local First Responder groups. The 'Dictionaries for Life' scheme has continued to provide illustrated personal dictionaries for all Year 5 pupils in Junior Schools across the Vale, as has our support for the Life Education Caravan, an entertaining way of educating children to better understand the effects of drugs, alcohol and smoking on the body.

We continue to support local individuals and groups via our Community Fund, providing donations of up to £250 and have helped fund a local guide who are undertaking educational and humanitarian work in Sri Lanka and another attending an international scouting event in Gdansk, Poland.

We are now supporting and mentoring Rota Kids groups in two local Junior schools.

Memory Café: Now in its 4th year continues to operate on the last Thursday of every month at All Saints Church, Cotgrave (2 - 4p.m.). More information on the Café can be obtained from Gerry Thompson on 07979392652.

Our **Vale's Got Talent** fund raiser is now in its 10th year with the Grand Final being held at The Grange Hall on Saturday 30th November.

Our Club The 43 members of our club meet at Ashmore's restaurant in Radcliffe on Thursday evenings 7.00 for 7.30, enjoying a meal and a range of activities (speakers, outside visits, games nights etc.). If you are interested in joining the Club, or just want further information please contact our secretary Gordon Marsh on 07933016544. Presidents Jane and Maggie would love to meet you.

The Arts Society Trent Valley

The Arts Society is an international organisation which brings people together through a shared curiosity for the arts and to hear expert lecturers share their specialist knowledge. Meetings are held at Grange Hall, Vicarage Lane, Radcliffe on Trent, Nottingham NG12 2FB, starting at 11.00 but doors open at 10.00 for coffee. If you would like to join the Society as a new member please contact us by email at: trentvalley@theartssociety.org and your details will be passed to the membership secretary. Visitors are welcome but only by prior arrangement with the visits secretary There is a £5 fee for visitors

Please look at our website – www.theartssocietytrentvalley.org for more information

Programme 2019-20

4 December: The Inventors of Christmas – Alan Read

8 January: The Green Man in art and myth

5 February: The Borgias – the most infamous family in History – Sarah Dunant

4 March: Canaletto in England – Andrew Davies

3 April : 100 years of deception, hoaxes and swindlers in the 18th century= Ian Kimble

6 May: The Model Wife= women in pre-Raphaelite art- Dr Suzanne Cooper

3 June: The splendours of North Africa= Roam and Islamic art of Libya, Tunisia and Morocco – Christopher Bradley

1 July: AGM ; Nicholas and Alexandria, Tyrants and Martyrs of Imperial Russia

Rockley Memorial Park - Opening / Closing Times

Month	Times
November - December - January	8am – 4.30pm
February - March	8am – 6pm
April - May - June - July August	8am – 9pm
September - October	8am – 6pm

Please note: These times have been set by policy of Radcliffe on Trent Parish Council.

Tel: 0115 9335808 Email: clerk@rotpc.com Web: www.rotpc.com

The **Radcliffe on Trent War Memorial** plinth steps at St Marys Churchyard have recently been sympathetically repointed, re- pinned and existing moss removed.

The steps have not been cleaned, so that the stonework is in keeping with the rest of the churchyard masonry.

50% of the funding will come from The War Memorial Trust and the Parish Council will provide the remainder.

NCC have also paid for stainless steel railings to be placed on the walls at the side of the steps leading up to the Memorial, also in keeping with the existing railings at St Marys Church Hall.



Photo by Geoff Curtis

Radcliffe on Trent Parish Council

Grange Hall, Vicarage Lane
Radcliffe on Trent, Nottingham NG12 2FB

'Silver Cinema'2020 At Grange Hall

We aim to put a film on every month in Grange Hall.

Please feel free to let us know what films you would like to see.

The dates for 2020 are:

Wednesday 29th January

Wednesday 26th February

Wednesday 25th March

Wednesday 29th April

Wednesday 27th May

Wednesday 24th June

Wednesday 29th July

Wednesday 26th August

Wednesday 30th September

Wednesday 28th October

Wednesday 25th November

£2 admission with a ticket – includes refreshments

Doors Open At 12.30pm and Film Starts At 1.00pm

For more information call the Hall Manager on 0115 9335808 Ex1
or Email bookings@rotpc.com

Look at our Notice Boards for details for what is being shown

CHOOSE LOCAL AND INVEST IN RADCLIFFE'S FUTURE

Shopping – love it or hate it, it has to be done! There are times when we ‘do the shopping’ because we just need to stock-up the cupboards, and other times when we simply gaze into shop windows and find that little something that we just have to buy. Whatever our purpose, we get to know where we go for what and who is able to supply just what we need in the way that we like it.

Trends and habits have changed significantly over recent years - the loss of several high street brands is ample evidence of this. The benefits of online shopping has driven many of us to only venture out to the places that are really worth making the effort to travel to. We have grown to value the experience of visiting somewhere, the atmosphere created or simply the quality of the coffee. Increasingly, ethical considerations are also influencing us – is our buying not just good for our pockets but is it also good for the environment?

So where does spending our money within Radcliffe fit into this complex picture?

As business owners in Radcliffe, we aim to provide quality goods and services which are not only on your doorstep but are also competitively priced. Compared with many villages and small towns, Radcliffe has so much to offer. A good range of products are brought to you with personal care and a friendly smile. It's now known that business done at a local level, has a significant impact on the local economy. Also, many residents will personally know someone who works very happily in a local business, leading to associated benefits to family life.

Radcliffe has a very distinctive ‘personality’ all of its own, with a wide variety of groups and events which are appreciated by residents of all ages across the whole community. From Radfest to the Fireworks Fiesta, the Carnival to the Village Show (plus a whole lot more) - we enjoy a village life which is worth celebrating! Our local businesses regularly contribute to this by giving of their time, energy and money in order to continue to make Radcliffe a vibrant place to live. Our Parish and Borough councillors regularly consider ways to improve the look and feel of the village and it's clear that a thriving economic environment would add much to the ongoing development of the village centre. No one wants Radcliffe to look just like every other high street and sustaining healthy commercial enterprise is to the benefit of the whole community.

So the next time you're off shopping out of the village, buying online, arranging a

meal with friends, choosing somewhere to talk over a coffee, treating yourself to a make-over or needing to find essential health-related services, why not pause and ask yourself whether one of our local Radcliffe businesses could provide you with a better product and a more personal service.

Thank you for investing in Radcliffe's future by shopping, using services and spending time locally.

Harry Hughes (Bowler and Charsley Opticians)

Radcliffe-on-Trent U3A

Laugh, live and learn with the Radcliffe-on-Trent U3A.

We are part of a national network of U3As offering people who are no longer in full-time employment the opportunity for late life learning, fellowship and enjoyment. Members share their skills and experiences through monthly meetings, addressed by interesting speakers, as well as through a wide variety of social activities and outings.

If you would like to learn more, please take a look at our website:

www.rot-u3a.org.uk

or come along to one of our next monthly open meetings. These take place on the first Thursday of the month at 2pm in the Grange Hall. Members and non-members are welcome. Tea, coffee and biscuits included.

Speakers for 2020

2nd January – Mike Storr – Masters of Mirth

6th February – Kevin Powell – A Place to Rest ... in Peace

5th March – Rosemary Gibson – Grantham Canal, Another World

2nd April – Mark Shardlow – A career in sports journalism

14th May – David Bell – The Plague Doctor

4th June – Jas Bilkhu, – Inspired to Aspire

2nd July – Jenny Saint, Deputy Lieutenant of Nottinghamshire – Her Majesty's Honours



NEIGHBOURHOOD WATCH SAFER AND STRONGER

THE UK'S LARGEST VOLUNTARY MOVEMENT

10 GOLDEN RULES from our umbrella organisation NOTTSWATCH - nottswatch.com

1. Be suspicious of all "Too good to be true" offers and deals.
There are no guaranteed get-rich-quick schemes.
2. Do not agree to offers or deals immediately. Insist on time to obtain independent/legal advice before making a decision.
3. Do not hand over money or sign anything until you have checked the credentials of the company or individual.
4. Never send money to anyone you do not know or trust, whether in the UK or abroad, or use methods of payment that you are not comfortable with.
5. Never give banking or personal details to anyone you do not know or trust. This information is valuable so make sure you protect it.
6. Always log on to a website directly rather than clicking on links provided in an email.
7. Do not rely solely on glowing testimonials: find solid independent evidence of a company's success.
8. Always get independent/legal advice if an offer involves, money, time or commitment.
9. If you spot a scam or have been scammed, report it and get help. Contact Action Fraud on 0300 123 2040 or online at www.actionfraud.police.uk. Contact the Police if the suspect is known or still in the area.
10. Do not be embarrassed to report a scam. Because the scammers are cunning and clever there is no shame in being deceived. By reporting you will make it more difficult for them to deceive others.

To start a new neighbourhood watch scheme in your area contact me, David Griffin, Area Coordinator for Radcliffe-on-Trent Neighbourhood Watch - Keeping Our Community Safer. In partnership with Nottinghamshire Police. Email address:- davidagriffin@hotmail.co.uk
Mobile telephone number 07789763412 - Answerphone messaging service.

Wednesday 27th November

Bring your own refreshments *

Enjoy a relaxed evening with friends

A STAR IS BORN

BRADLEY COOPER

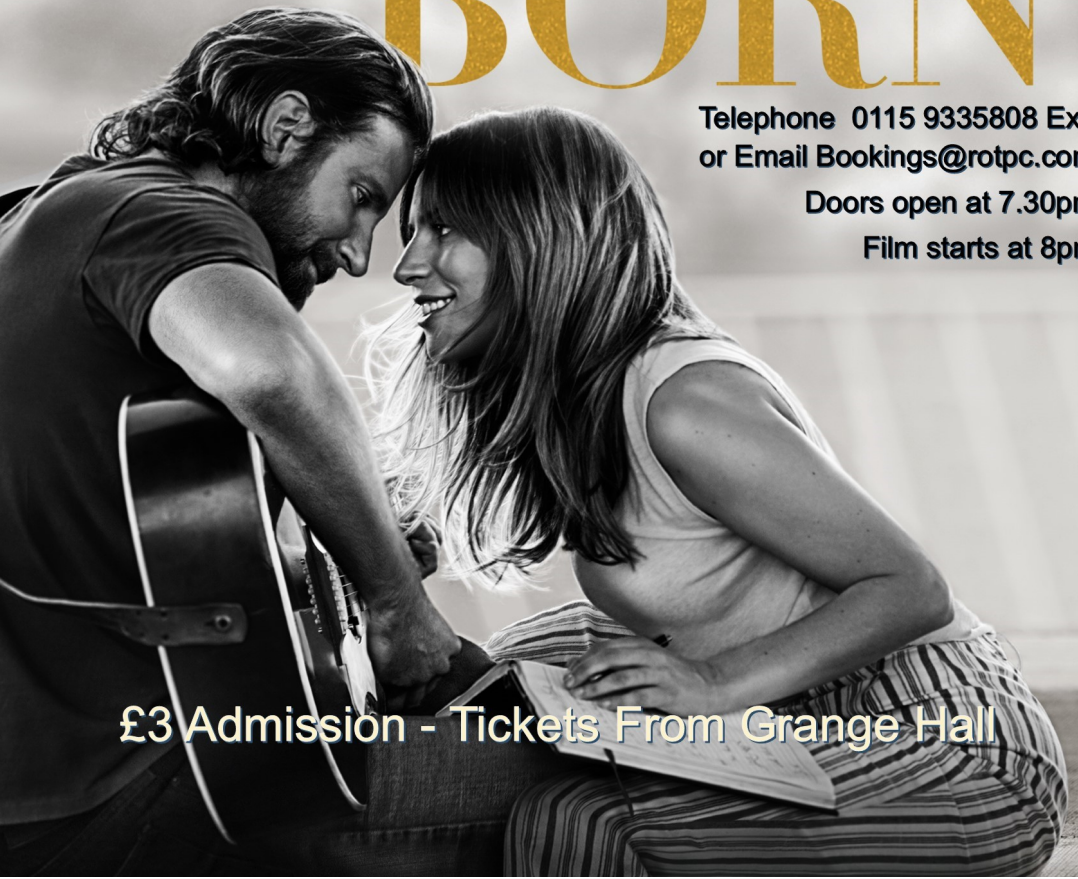
LADY GAGA

Telephone 0115 9335808 Ex1
or Email Bookings@rotpc.com

Doors open at 7.30pm

Film starts at 8pm

£3 Admission - Tickets From Grange Hall





Exciting opportunities from Rushcliffe Community and Voluntary Service

Rushcliffe and Gedling Voluntary Transport Scheme

Do not have access to a car or public transport? Relax, for a small membership fee, you can depend on our volunteer drivers to get you from A to B, whether it's to the doctors, shopping or a friend's house! One of our recent passengers said:

"Using the transport scheme takes a lot of my worries away and makes my life a lot easier – knowing I can trust and rely on the service and its very caring and reliable drivers."

Over 300 people who find it difficult to get out and about rely on our service, if you'd like to be one of them then we would love to hear from you! Just call us on 0115 9699060.

We always need volunteers to provide this service so, if you have a car and generously want to help people within your local area then also please do get in touch.

Handy Housekeepers – making housework less of a handful!

Do you take pride in your home but struggle to manage on your own? Our Handy Housekeepers are committed to helping older people. Whether it's cleaning, laundry or ironing, we can tailor our service according to your needs, at a small cost of just £15 per hour.

Please call us on 0115 9699060 if you are interested in using our service, or, if you have the knack for cleaning and would love to help whilst getting paid, please contact us.

Telephone 0115 9699060 or email admin@rushcliffecvs.org.uk

Radcliffe Archaeological Project

Another busy year for RAP, we have dug 8 test pits in gardens throughout the village and discovered many interesting items, such as part of a hob-nailed boot - with the nails worn down, see below, and an oyster-shell with a hole in the middle from which a mother-of-pearl button had been cut. We have found pottery from approx. 8th Century to the present day and hand-made bricks in an ancient wall, a 13th Century wall made from the local mudstone and the seal from a bottle with the Earl Manvers crest on it. Who knew that years before our milkmen put their dairy name on the bottle we were using personally identifiable bottles.

Last year we found a 13th Century wall in The Grange grounds by the bar-b-q so In September we asked a geophysicist to survey the area to identify older buildings below the soil. We know Vicarage Lane is an ancient walkway so it is likely there were houses along it. We want to know how many and where.



This winter we are planning to exchange our spades for walking boots and start field-walking the arable areas around Radcliffe. We will be doing this in conjunction with Bingham and Southwell and will be starting with Saxondale – well, with a name like that we have to, don't we? Whilst our local Romans lived around Margidunum and Newton it is thought that the Saxons first settled in Saxondale and Saxton's Lings. If anyone wants to join us either look on our website for more information when it is sor, www.radcliffearchaeology.org.uk or our Facebook page Radcliffe Archaeological Project. If you have any queries contact annemcleod55@icloud.com



Get ready to BHANGRA!

**Hi-energy dance music - Western Pop meets
Bollywood film & Punjabi folk music**

RadVentures
BRINGING THE ARTS AND PROFESSIONAL
ENTERTAINMENTS TO RADCLIFFE ON TRENT

A special gig for age seven to 77+

Enjoy new music to sway, smile & move to

Sunday 19th January 2020 @ 7.30pm

Grange Hall, Radcliffe on Trent NG12 2FB

Tickets £10 (£6.00 under 16's)

RadVentures direct: tel: 07718 159 520

or from **Pen2Paper** gift/stationers (*next to Veg shop*)

Don't miss it! Bring drinks & nibbles.

The Radcliffe-on-Trent Parish Council Newsletter goes out to 4,000 home and business in the Parish. If you would like to place an advert contact the Hall Manager on 0115 9335808 Ex1 or email bookings@rotpc.com for more information.

Rates:

Full page.....£105 (inc.VAT)

Half page.....£56 (inc. VAT)

Quarter page.....£30 (inc. VAT)

These can be landscape or portrait

Please note:

Any opinions expressed or inferred in this Newsletter are not necessarily those of the Parish Council.

The deadline for articles and adverts for the next issue will be 15th April 2019

Send to bookings@rotpc.com or phone 0115 9335808 Ex1

Send as JPEG, PDF or WORD



VINCE EAGER
&
The Memphis Tones
Nottingham Palais Favourites
Tristram Shandy
Plus Special Guests
Moonshiners
Saturday 28th December
Tickets £12 from Pen2Paper or 01159333009
Bring your own booze, glasses and nibbles!!



M.A. Mills Funeral Service

(Formerly C.D. Allcock Funeral Service) Proprietors Michele and Anthony Mills since 2001

*Personal
and sensitive
service*

Independent Family Run business with all calls & arrangements personally dealt with by the proprietor.

- A Traditional Service to All Areas at All Times
- Pre-payment Plans Available
- Monumental Masons
- Home Visits
- Mercedes Fleet
- 24 Hour Service

Tel: 0115 933 6906

38 Main Road, Radcliffe on Trent, Nottingham
www.mamillsfuneralservice.co.uk

Radcliffe On Trent Drama Group - Who?

Some of you reading this may have dismissed us as an 'amateur dramatics society'. You may be surprised to learn that we are a multi-award winning group and these are awarded by an independent adjudicator.

We typically have audiences of around 600 - 700 per play and we get the most encouraging and motivating response during the play and afterwards. If you are one of those who has seen our advertising boards and posters around the village but had previously decided not to give us a try, why don't you come along to one of our performances and judge for yourself.

Here's what some of our previous audience members have written to us.

"Fantastic performance! We were treated to 4 plays in one night and were taken on a trip around the world. The quality of the acting was superb and both me and my husband thoroughly enjoyed ourselves. We're looking forward to the next performance in November. Thank you." Jenny

"High standard entertainment and production by a very talented cast for an affordable price!" Lizzie

"We saw Educating Rita last night. What a triumph! Quite a brilliant performance. Please congratulate yourself, the actors and all the other people involved. All best wishes." Di

We are also keen to welcome new members who wish to act, learn how to run the technical side or to help with the thousand and one other jobs that ensure that our productions remain successful.

To find out more, without obligation, contact our secretary Katherine Buttfield 07532 777306, and check the website www.radcliffe-on-trentdramagroup.co.uk





Radcliffe Food & Gift Festival

Grange Hall, Radcliffe on Trent

*Delicious Food * Mulled Wine * Christmas Gifts*

Performance by Radcliffe on Trent Infant School
2.00pm

Christmas Carols with Phoenix Signing Choir 4.15pm

Village Christmas Light Switch On 4.45pm

Sunday 24th November 2019

Doors open: 12:30pm - 5:00pm

Admission £3.00. Children under 12 years old free of charge

In aid of local groups and charities

Sponsored by The Radcliffe



Charitable & Community Events

Although the organisers of some charitable or community events choose to advertise on public highway, this is contrary to the Highways Act 1980. Adverts on the public highway, be they on lamp columns, traffic signs or signals, trees or pedestrian barriers, highway verges, can pose a danger to both pedestrians and motorists, and they also make an area look untidy and create an eyesore.

However, we will not generally take any action to remove such adverts or prosecute the organisers. Although we do ask that organisers observe the following conditions:

- Adverts should only be affixed to lamp columns, and not to traffic signs, traffic signals, trees or pedestrian barriers.
- Adverts should not be placed within 5m of a traffic junction.
- The method of affixing the advert must not damage the lamp column in any way.
- Adverts should not be affixed earlier than seven days before the event, and removed within 24 hours after then event.
- All fixings must be removed when the advert is removed.
- Thought should be given to the size, design and number of adverts.
- The adverts should state the name of the charity that is benefiting from the event.
- Please note that we may remove any adverts that do not observe these conditions, or pose a danger, are offensive, or too numerous.

You can help by:

reporting any fly-posting or graffiti by using our report a problem section on our website or you can call us on 0115 981 9911.

Monday 16th December



South Nottinghamshire Academy & Radcliffe-on-Trent Parish Council

Over 65's Christmas Concert With Festive Tea 2.00-5.00pm At Grange Hall

Tickets from Grange Hall

Contact bookings@rotpc.com or Telephone 0115 9335808 Ex1



SOUTH NOTTINGHAMSHIRE
ACADEMY



£2

At Grange Hall

Radcliffe-on-Trent

Sunday 1st December

Starts at 3.00pm

A Christmas Afternoon

With the

Nottingham Concert Band

Refreshments Available

Tickets Available At Grange Hall £5

Tel 0115 9335808 Ex1

Email Bookings@rotpc.com



Radcliffe Parish Council Silver Cinema

Wednesday 18th December



At Grange Hall

£2 Admission - Tickets From Grange Hall

Telephone 0115 9335808 Ex1 or

Email Bookings@rotpc.com

Doors Open At 12.30pm -o0o-

Film Starts At 1.00pm